



## **ANALGESIA METER (HOT & COLD PLATE TYPE)**

For testing hot & cold temperature induced pain in mice & rat



[www.orchidscientific.com](http://www.orchidscientific.com)



## **ANALGESIA METER (HOT & COLD PLATE TYPE)**

For testing hot & cold temperature induced pain in mice & rat

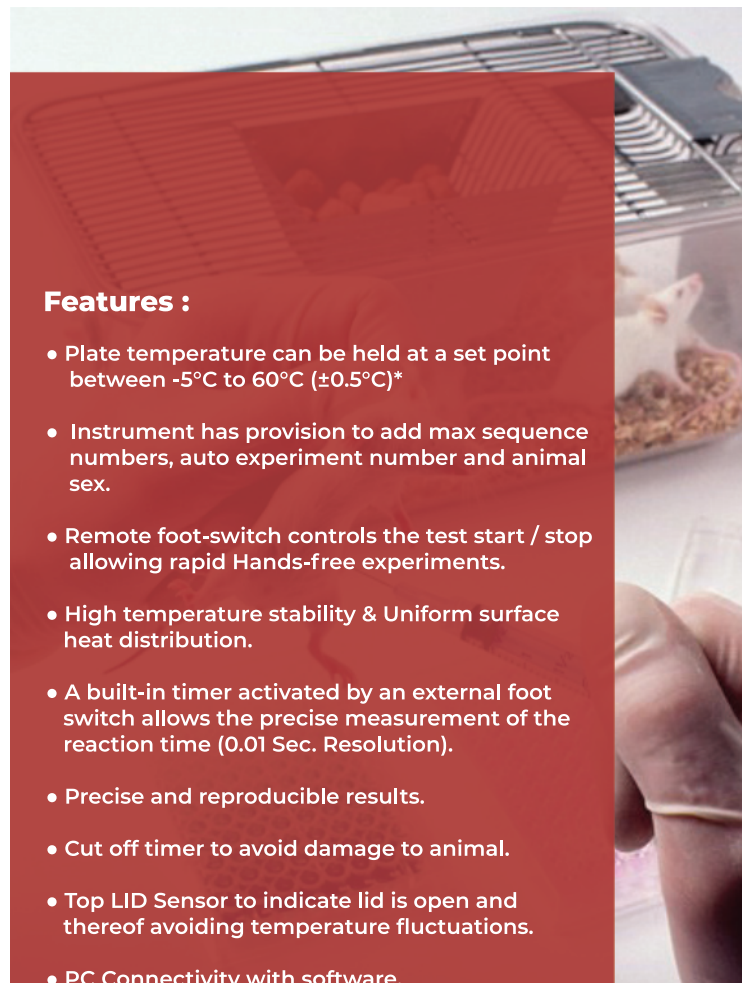
The Hot & Cold Plate Analgesia Meter performs rapid & precise screening of analgesic drug properties on small laboratory animals.

Orchid's Hot & Cold Plate Analgesia Meter has been developed for both conventional hot plate tests and cold pain test.

Pain sensitivity to heat is assessed by placing the animal on the top of aluminium plate and starting the timer. The operator stops the timer at the instant the animal lifts its paws from the plate, reacting from discomfort. The front panel timer displays the latency to react, a measurement of the animal's resistance to pain.

### **Features :**

- Plate temperature can be held at a set point between -5°C to 60°C ( $\pm 0.5^\circ\text{C}$ )\*
- Instrument has provision to add max sequence numbers, auto experiment number and animal sex.
- Remote foot-switch controls the test start / stop allowing rapid Hands-free experiments.
- High temperature stability & Uniform surface heat distribution.
- A built-in timer activated by an external foot switch allows the precise measurement of the reaction time (0.01 Sec. Resolution).
- Precise and reproducible results.
- Cut off timer to avoid damage to animal.
- Top LID Sensor to indicate lid is open and thereof avoiding temperature fluctuations.
- PC Connectivity with software.
- Software with calibration and report generation feature.
- Software has provision to add title, comment, graphical presentation and data can be converted in excel or pdf.



**System Specification & Models :**

Model	Control Unit Dimensions mm (LxWxH)	Plate Dimensions mm (LxWxH)	Animal Enclosure Dimensions mm (LxWxH)	Temperature Range °C	Reaction Time Seconds
HC-01	Box 1 : 310x190x184 Box 2 : 300X325X140	190X190X6	205x205x250	-5°C to 60°C (± 0.5° C)	Digital Timer Resolution of 0.01s

**Ordering Information :**

Model	Certifications	Power Requirements	Accessories
HC-01	CE Compliant	220/230V AC 50Hz 110/120V AC 50-60Hz*	Control Panel With Acrylic Chamber, lid and Foot switch

\*Needs to be specified in order information

Note : For achieving the extremes of the Cold mode temperature, ambient temperature must be within 17°C range of set temperature.

**Software Report Formats :**

The image displays two screenshots of the ORCHID Scientific software interface. The left screenshot shows an 'Experiment Report' page with the following data:

SeqNo	Animal ID	Gender	Ambient Temp (°C)	Response Time (sec)	Ramp Temp (°C)	Animal Wt (gms)
1	1	Female	30.2	C.O		
2	7	Female	30.2	2.00		
3	11	Male	30.2	2.82		
4	2	Female	30.2	3.19		
5	3	Female	30.2	C.O		
6	3	Female	30.2	C.O		

The right screenshot shows a 'Report' dialog box with a table of results and a bar chart. The table data is as follows:

Seq No	Animal ID	Gender	Ambient Temp (°C)	Response Time (sec)	Ramp Temp (°C)	Animal Wt (gms)
1	1	Female	30.2	C.O		0.00
2	7	Female	30.2	2.00		0.00
3	11	Male	30.2	2.82		0.00
4	2	Female	30.2	3.19		0.00
5	3	Female	30.2	C.O		0.00
6	3	Female	30.2	C.O		0.00

Note: Orchid's continuing product development makes specifications subject to change without prior notification

# ANALGESIA METER (HOT & COLD PLATE TYPE)

## Contact US

ORCHID SCIENTIFIC & INNOVATIVE INDIA PVT.  
LTD. B-59, M.I.D.C., Ambad, Nashik-422010, India

**Tel.:** +91253-2387600, 2382525, 2381515

**E-mail:** [info@orchidscientific.com](mailto:info@orchidscientific.com)

[orchidscientific@gmail.com](mailto:orchidscientific@gmail.com)

**Website:** [www.orchidscientific.com](http://www.orchidscientific.com)



Only Science, No Fiction



AN ISO 9001 : 2008 CERTIFIED COMPANY

