



SphereFlash®

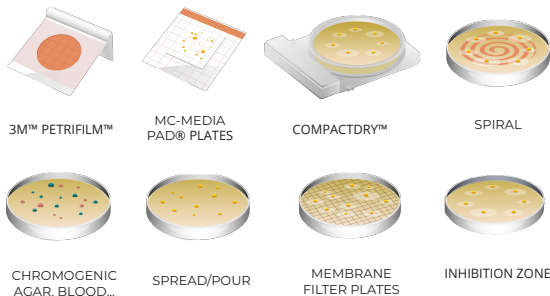
Automatic Colony Counter

Pharmaceutical | Food & Beverage | Personal care | Environment | Cosmetics

Product Overview

The SphereFlash® is an Automatic Colony Counter that meets all the requirements of modern microbiology laboratories while **increasing its throughput**.

SphereFlash® is a one-size-fits-all solution that reads automatically different types of plates with the same instrument.



3M™ PETRIFILM™

MC-MEDIA PAD® PLATES

COMPACTDRY™

SPIRAL

CHROMOGENIC AGAR, BLOOD...

SPREAD/POUR

MEMBRANE FILTER PLATES

INHIBITION ZONE



Patented spherical chamber

Main benefits

Reflection-Free Illumination

Its patented spherical chamber eliminates reflections in both colonies and Petri plates, and this enables uniform illumination. An improved image capture for better, more reliable and consistent results.

One-size-fits-all

The adapters and centering devices designed to fit various diameters enable to switch plate very easily, providing a great gain of time.

World-Class Software

Easy & intuitive powerful software. Even the LITE version will detect a wide range of colony types with minimal or no user parametrization.

Statistical Report

Easy and automatic generation of result reports, with customizable layout, containing as many plates as needed.

Audit Trail & User Management

SphereFlash® Colonies Pro & Halos Pro softwares comply with 21 CFR Part II. Their security-relevant chronological set of records will provide documentary evidence of the sequence of activities that have affected a specific operation.

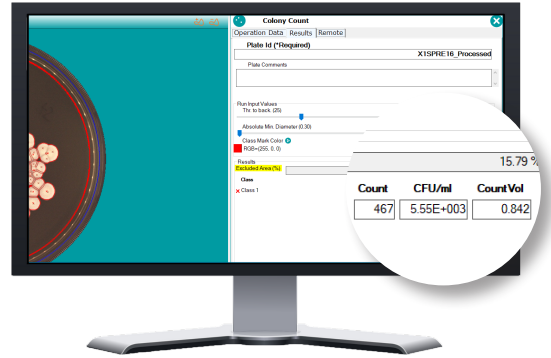
High resolution

SphereFlash® is capable of detecting colonies of 0.3 mm using Colonies Lite Software and 0.046 mm using Colonies Pro Software.

Software: Colonies Lite, Colonies PRO & Halos PRO



As we understand that resources are limited we designed the SphereFlash® with a small footprint and scalable software. Use only the features you need and add new capabilities as your lab work requires.



SOFTWARE CHARACTERISTICS

INCLUDED

Colonies LITE

STANDARD METHODS

- Colony counting
- Automatic Calibration & Verification
- Report Generation
- Data export in PDF & CSV
- Images export in .PNG
- Statistical Report
- Designed for 100 mm, 90 mm, 60 mm (RODAC plates) and membrane filter plates
- Accessories available for 3M™, Petrifilm™, CompactDry™ and MC-Media Pad® plates

Colonies lite SW included with the SphereFlash®

UPGRADE

Colonies PRO

CREATE YOUR COLONY COUNTING METHODS

- Colony counting
- Automatic Calibration & Verification
- Classify the colonies by color or size
- User Management
- Audit Trail available
- CFR21 Part 11 - Compliant
- Worksheet Mode
- Remote Input-Output Mode (LIMs)
- Report Generation
- Data export in PDF & CSV
- Images export in .PNG
- Logo customization on the report
- Statistical report
- Designed for 90 mm, 60 mm (RODAC plates) and membrane filter plates
- Accessories available for 3M™, Petrifilm™, CompactDry™ and MC-Media Pad® plates

UPGRADE

Halos PRO

CREATE YOUR HALO MEASURING METHODS

- Inhibition Zones Measurement
- Antibiotic Potency Test according to the procedure of US Pharmacopoeia
- Automatic Calibration & Verification
- User Management
- Audit Trail available
- CFR21 Part 11 - Compliant
- Worksheet Mode
- Remote Input-Output Mode (LIMs)
- Report Generation
- Data export in PDF & CSV
- Images export in .PNG
- Logo customization on the report

Accuracy of counting

The SphereFlash® software is designed to filter and classify colonies by colors and diameters

SphereFlash® can distinguish colonies on challenging backgrounds

SphereFlash® is able to count colonies in spiral distribution

The SphereFlash® software can distinguish overlapped colonies

Workflow

- Put the Petri Dish in the **centring device** of SphereFlash®
- Choose the method** you want to apply according to your plate
- SphereFlash® **counts the colonies in 2 seconds**
- Obtain your report** and print it in PDF.

Reflection-Free Illumination

The lighting is done through LEDs oriented to the internal wall of a moving spheric chamber and comes from above and/or below the chamber. The result is an unprecedented uniform and reflection-free illumination in the colony counter device.

The moving sphere automatically closes the chamber and prevents the area from any external light.



Technical data

| | |
|--------------------------------|---------------------------------------|
| Dimensions | 288x220x371 mm (1.34x8.66x14.6 in) |
| Weight | 5,5Kg (12.13 lb) |
| Computer interface | USB 3.0 Type-A socket |
| Mains AC adapter Output | 12V DC 3.43A |
| Power Range | 90 ~ 264 VAC |
| Frequency Power | 47 ~ 63Hz |
| Maximum Power | 40W |
| Air temperature | 15-30°C (59-86°F) |
| Frequency Range | 50-60Hz |

Computer requirements

*Computer not included

Microsoft Windows® 7, 8.1,10 (x64 platforms).

1 free USB 3.0 Port.

8 GB of RAM memory.

100 MB of free disk space and 100 GB for the Database (for 5000 results stored with images).

FullHD screen (1920x1080) recommended

24" screen size recommended.

Microsoft Excel® 2007 or higher, 64 bits to open exported Excel® files.

A virtual PDF printer to create PDF reports.

Ensure your samples are prepared the best way for SphereFlash®



Eddy Jet 2W – Spiral plater

Eddy Jet 2W standardizes and streamlines plate inoculations with its patented cross-contamination-free technology.



Spin Air - Air Sampler

With its rotatory system, microorganisms stay on the plate in spiral homogeneously distributed in the Petri dish.

Accessories

- AC Adapter
Cat. No.90004013
- Power Cord
Cat. No.90004017
- Verification disk for Halos
Cat. No.900011876
- Verification disk for Colonies
Cat. No.90004113
- Calibration disk
Cat. No.900010081
- Cable USB 3.0
Cat. No.90001960
- Centering device ~87-91 mm ø
Cat. No. 900013473
- Centering device 65-70 mm ø
Cat. No.900010081
- Centering device 54-60 mm ø
Cat. No.900013512
- Compact Dry™ adapter
Cat. No.900013347
- Petrifilm™ adapter
Cat. No.900013525
- MC-MEDIA® adapter
Cat. No.900013536
- Barcode reader
Cat. No. 90005701

Ordering Information

- SphereFlash® Colony Counter unit (includes Colonies LITE software)
Cat. No.90007000
- Colony PRO software
Cat. No.90007001
- Halos PRO software
Cat. No.90007002

ISO
7218

FDA
21 CFR Part 11

For more information about SphereFlash®, scan the QR code

For more information visit us at:

iul-instruments.com

IUL SA Carrer de la Ciutat d'Asunción, 4 - 08030 Barcelona (Spain)
sales@iul-inst.com • T. +34 93 274 02 32

