



LABOMED, INC.

H-7028 Fully Automatic 28 Parameter Hematology Analyzer (5 Diff.) (Less Service, More Stable)

28 parameters + 3 histograms + 1 scattergram

WBC, LYM#, LYM%, NEU#, NEU%, 8AS#,

BAS%, MON#, MON%, EOS#, EOS%,

RBC, HGB, HCT, MCV, MCH, MCHC,

RDW-SD, RDW-CV, PLT, PDW, MPV,

PCT, P-LCR, ALY#, ALY%,

LIC#, LIC%

RSC histogram,

PLT histogram,

Baso histogram and

WBC differential scattergram



H-7028 Fully Automatic 28 Parameter Hematology Analyzer (5 Diff.) (Less Service, More Stable) is a multi-parameter automated Hematology Analyzer designed for clinical laboratories, offering WBC, RBC, PLT, 5-diff, and 24 other testing parameters. The analyzer uses light scatter and impedance technology for WBC differential and impedance method for RBC and PLT. With the most updated technology and concepts, it best meets most clinical laboratory requirements for an automated hematology analyzer. The equipment offers user-friendly software, powerful functions and accurate results.



H-7028 Fully Automatic 28 Parameter Hematology Analyzer (5 Diff.) (Less Service, More Stable)

Measuring Principles

Fluorescence Flow Cytometry Technology/cytochemical flow cytometry using
 Semi-Conductor LASER and Dye Reagents for WBC and 5 Differential for WBC.
 Hydrodynamic Focus/impedance/optical focus flow detection method for RBC & PLT Analysis.
 Cyanide free SLS/Photometric – Hemoglobin method for HGB measurement.
 Measuring Principles LIC

The H-7021 offers 3 differential tests, while the H-7028 offers 5 differential tests.
 The H-7028 offers several additional tests, including:

- NEUT (#): Neutrophil Count
- NEUT (%): Neutrophil Ratio,
- LYMPH (#): Lymphocyte Count,
- LYMPH (%): Lymphocyte Ratio
- MXD (#): Eosinophil, Basophil and Monocyte Count
- MXD (%): Eosinophil, Basophil and Monocyte Ratio
- RDW-SD: Red Blood Cell Distribution Width - Standard Deviation
- RDW-CV: Red Blood Cell Distribution Width - Corpuscular Volume

Parameters

28 parameters +3 histograms + 1 scattergram

- | | | | |
|--|-------------------------------|--|---------------------------------------|
| NEUT (#): Neutrophil Count | NEUT (%): Neutrophil Ratio | LYMPH (#): Lymphocyte Count | LYMPH (%): Lymphocyte Ratio |
| MXD (#): Eosinophil, Basophil and Monocyte Count | | MXD (%): Eosinophil, Basophil and Monocyte Ratio | |
| RDW-SD: Red Blood Cell Distribution Width - Standard Deviation | | RDW-CV: Red Blood Cell Distribution Width-Corpuscular Volume | |
| WBC (#): White Blood Cell Count | RBC (#): Red Blood Cell Count | MONO (#): Monocyte Count | MONO (%): Monocyte Ratio |
| GR (#): Granulocyte count | GR (%): Granulocyte Ratio | HGB (#): Hemoglobin Count | HGB DW: Hemoglobin Distribution Width |
| MCH: Mean Corpuscular Hemoglobin | | MCHC: Mean Corpuscular Hemoglobin Concentration | |
| MCV: Mean Corpuscular Volume | | HCT (#): Hematocrit Count | PLT (#): Platelet Count |
| PCT: Prolactin Count | MPV: Mean Platelet Volume | PDW: Platelet Distribution Width | RTC: Reticulocyte Count |
| WBC Histograms: White Blood Cell Histograms | | RBC Histograms: Red Blood Cell Histograms | |
| PLT Histograms: Platelet Histograms | | Baso Histograms: Basophil Histograms | |
| WBC (White Blood Cell) Differential Scattergram | | NEUT (#): Neutrophil Count | NEUT (%): Neutrophil Ratio |
| BASO (#): Basophil Count | BASO (%): Basophil Ratio | EOS (#): Eosophil Count | EOS (%): Eosophil Ratio |
| P-LCR (#): Platelet Large Cell Ratio | | | |
| ALY (#): Atypical Lymphocyte Count | | ALY (%): Atypical Lymphocyte Ratio | |
| LIC (#): Limiting Isorrheic Concentration Count | | LIC (%): Limiting Isorrheic Concentration Ratio | |

These extra parameters are available on the H-7028 and not on the H-7021:
 (NEU#, NEU%, BAS#, BAS%, EOS#, EOS%, RDW-SD, RDW-CV, P-LCR, ALY#, ALY%, LIC#, LIC%,
 BASO, RSC Histogram)

- | | |
|---------------------------|---|
| Sample Volume: | Min 20uL EDTA Whole Blood |
| Throughput (T/hr): | 60 samples per hour or above |
| Operating System: | Windows 7 or later |
| PC Hardware: | Must be purchased separately (Labomed, Inc. does not sell it) |
| RAM: | ≥ 1GB, HDD: 160 GB SATA |
| Display: | ≥ 17" LCD Color Monitor |
| Data Storage: | Min 10,000 test about patients |
| Discrete Mode: | CBC Mode CBC+DIFF Mode |
| Power Supply: | 230V AC, 400W, 50Hz, locally compatible mains plug, set of replacement fuses (if replaceable type used) |
| Dimensions: | 400 x 420 x 490mm |
| Weight: | 25kg |

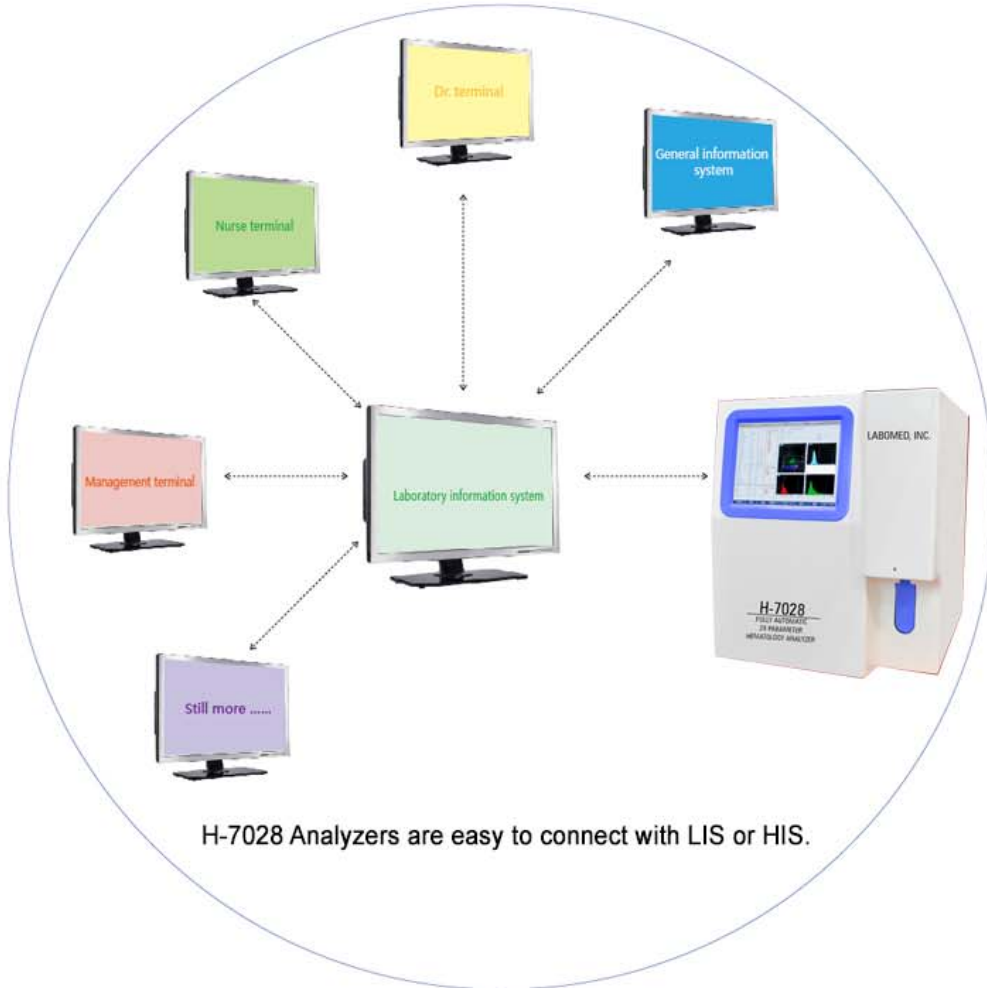
Accessories

- UPS: Appropriate true online UPS with 1 hour back up (Optional)
- Roller Mixer for Homogenous mixing of Blood - one (Optional)
- One set Startup Reagents (Optional)
- Reagents for 5000 test at user end (Optional)



LABOMED, INC.

H-7028 Fully Automatic 28 Parameter Hematology Analyzer (5 Diff.) (Less Service, More Stable)



■ Report with complete information.

2728 S. La Cienega Blvd., Los Angeles, CA 90034
www.labomed.com spectro@labomed.com

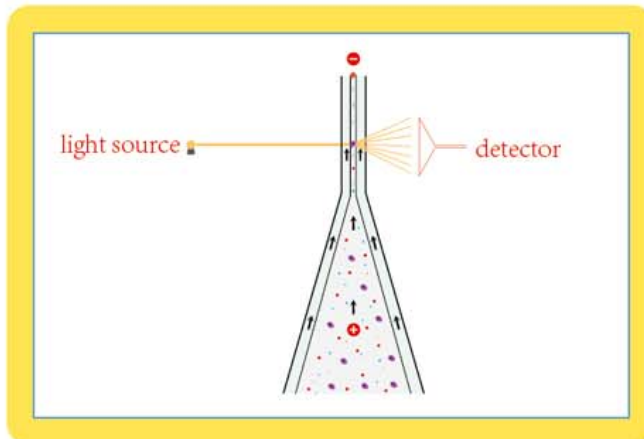


LABOMED, INC.

H-7028 Fully Automatic 28 Parameter Hematology Analyzer (5 Diff.) (Less Service, More Stable)



■ High-tech electronic measuring system.



■ Light scatter and impedance measuring for WBC diff.



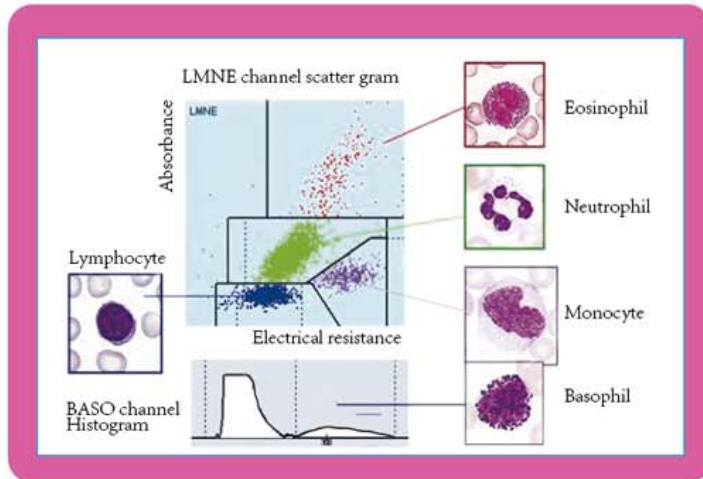
■ Calibrators, controls and reagents.

2728 S. La Cienega Blvd., Los Angeles, CA 90034
www.labomed.com spectro@labomed.com



LABOMED, INC.

H-7028 Fully Automatic 28 Parameter Hematology Analyzer (5 Diff.) (Less Service, More Stable)



- Accurate and reliable WBC 5-part diff.



- Friendly and convenient interface.

2728 S. La Cienega Blvd., Los Angeles, CA 90034
 www.labomed.com spectro@labomed.com