

# LABORATORY CENTRIFUGE

## MPW 380 / MPW 380 R

No 10380 / No 10380 R



Registered No: PL DR 017358

### APPLICATION

MPW 380 and MPW 380R are universal table top laboratory centrifuges consist of versions:

MPW 380 – ventilated

MPW 380R – refrigerated

They are applied in medical and other laboratories which required big effective equipment.

### ADVANTAGES

- maintenance-free brushless motor
- microprocessor controller
- modern microprocessor controller provides for:
  - 99 operating programs;
  - preselection for rotational speed or RCF at 10 rpm,
  - time: 5 sec. ÷ 9 min. 59 sec. at 1 sec
  - time: 10 min. ÷ 9 hours 59 min. at 1 min or continuous spinning HOLD
  - 10 acceleration and deceleration curves,

- temperature
- graphic LCD
- short spin button for quick spins,
- options:
  - precooling program with spinning or without it,
  - cooling program after finishing of spinning,
  - possibility of automatic opening of the cover after finishing of spinning
  - possibility of programming the delay of start
  - possibility of changing maximal radius of spinning with conversion into RCF
  - possibility of changing density of spinning sample over 1,2 g/cm<sup>3</sup> with automatic adjustment of maximum speed
- selection of 20 exchangeable rotors and buckets from the offer
- automatic rotor indication,
- selection of menu language, setting of time and date

### TECHNICAL DATA

	MPW 380 No 10380	MPW 380R No 10380R
Electric supply	230 V 50/60 Hz option 115V 50/60 Hz	
Power consumption	750 W	1300 W
Max capacity	1,6 l	
Speed	100-18000 rpm	
Max. RCF	31150 x g	
Time	5 sec ÷ 9 hours 59 min, <sup>∞</sup>	
Temperature control	-	-20° ÷ +40° C
Dimensions	650x520x455 mm	650x715x455 mm
Weight without accessories	72 kg	108 kg



Angle rotor 30x2,2/1,5ml, with HS\*,  
No 11761, max. speed 16 400 rpm,  
RCF 29 168xg,  
Max. radius R= 9,7 cm,  
angle 45°



Angle rotor 36x2,2/1,5ml, with HS\*,  
No 11762, max. speed 18 000 rpm,  
RCF 30 065xg,  
Max. radius R= 8,3 cm,  
angle 45°



Angle rotor 48x2,2/1,5ml, with HS\*,  
No 11763, max. speed 16 400 rpm,  
RCF 28 265xg,  
Max. radius R= 9,4 cm,  
angle 45°



Angle rotor 36x2,2ml,  
with filter, with HS\*,  
No 11779, max. speed 15 000 rpm,  
RCF 22 136xg,  
Max. radius R= 8,8 cm,  
angle 45°



Angle rotor 12x8x0,2ml PCR, with HS\*,  
No 11765, max. speed 16 400 rpm,  
RCF 28 566xg,  
Max. radius R= 9,5 cm,  
angle 45°



Angle rotor 12x10ml (81mm), with HS\*,  
No 11766, max. speed 18 000 rpm,  
RCF 31 150xg,  
Max. radius R= 8,6 cm,  
angle 30°



Angle rotor 12x10ml (100mm), with HS\*,  
No 11767, max. speed 14 000 rpm,  
RCF 20 598xg,  
Max. radius R= 9,4 cm,  
angle 30°



Angle rotor 12x15ml Falcon, with HS\*,  
No 11770, max. speed 14 000 rpm,  
RCF 23 227xg,  
Max. radius R= 10,6 cm,  
angle 30°



Angle rotor 8x30ml Nalgene, with HS\*,  
No 11772, max. speed 17 500 rpm,  
RCF 29 787xg,  
Max. radius R= 8,7 cm,  
angle 30°



Angle rotor 6x50ml Nalgene, with HS\*,  
No 11773, max. speed 14 500 rpm,  
RCF 21 625xg,  
Max. radius R= 9,2 cm,  
angle 30°



Angle rotor 8x50ml Nalgene, with HS\*,  
No 11775, max. speed 14 000 rpm,  
RCF 21 255xg,  
Max. radius R= 9,7 cm,  
angle 30°



Angle rotor 8x50ml Falcon, with HS\*,  
No 11776, max. speed 14 000 rpm,  
RCF 23 666xg,  
Max. radius R= 10,8 cm,  
angle 30°

\* HS hermetically sealed lid



Angle rotor 6x94/85ml Nalgene, with HS\*,  
No 11778, max. speed 12 000 rpm,  
RCF 17 710xg,  
Max. radius R= 11 cm,  
angle 30°



Angle rotor 4x250ml Nalgene, with HS\*,  
No 11777, max. speed 10 000 rpm,  
RCF 14 086xg,  
Max. radius R= 12,6 cm,  
angle 25°



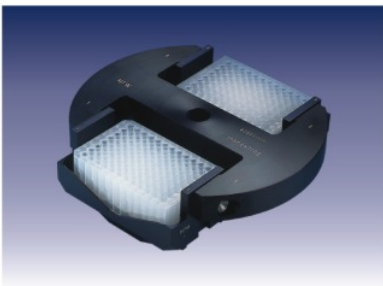
Angle rotor 12x50ml Falcon,  
No 11780, max. speed 4 500 rpm,  
RCF 3 328xg,  
Max. radius R= 14,7 cm,  
angle 30°



Angle rotor 36x15ml Falcon,  
No 11784, max. speed 5 000 rpm,  
RCF 3 996xg,  
Max. radius R= 14,3 cm,  
angle 30°



Angle rotor 48x15ml Falcon,  
No 11785, max. speed 4 700 rpm,  
RCF 4 025xg,  
Max. radius R= 16,3 cm,  
angle 30°



Swing-out rotor No 12787  
with 2 buckets No 13286  
for 3 microtiter plates  
Max. speed 4 300 rpm,  
RCF 2 398xg,  
Max. radius R=11,6 cm



Swing-out rotor 4x400ml,  
No 12830, with buckets  
No 13831C or No 13833C  
Max. speed 4 500 rpm,  
RCF 4 188xg,  
Max. radius R=18,5 cm



Swing-out rotor 4xASTM,  
No 12791 with buckets  
No 13792 C  
Max. speed 2 500 rpm,  
RCF 1 292xg,  
Max. radius R=18,5 cm

\* HS hermetically sealed lid

Adapters for bucket 13831



No 14836 24x5ml (Ø13,5x75mm)	No 14837 16x10ml (Ø17x100mm)	No 14838 12x15ml (Ø17x120mm)	No 14839 8x30ml (Ø26x102mm)	No 14840 5x50ml (Ø30x120mm)	No 14841 2x100ml (Ø45x103mm)	No 14842 250ml (Ø62x135mm)	No 14844 26x2,2ml (Ø11x43mm)
------------------------------------	------------------------------------	------------------------------------	-----------------------------------	-----------------------------------	------------------------------------	----------------------------------	------------------------------------

Adapters for bucket 13833



No 14845 18x5ml (Ø13,5x75mm)	No 14846 12x10ml (Ø17x100mm)	No 14847 12x15ml (Ø17x120mm)	No 14848 5x30ml (Ø26x102mm)	No 14849 4x50ml (Ø30x120mm)	No 14850 100ml (Ø45x103mm)	No 14851 250ml (Ø62x135mm)	No 14853 24x2,2ml (Ø11x43mm)
------------------------------------	------------------------------------	------------------------------------	-----------------------------------	-----------------------------------	----------------------------------	----------------------------------	------------------------------------



Rectangular bucket No 13831C with cap for carriers

Round bucket 400ml No 13833C with cap for bottles and carries



Thermal printer No 16595



- Certified Management System
- DIN EN ISO 9001
- DIN EN ISO 13485

**MPW Med. instruments**  
 46 Boremlowska Str, 04-347 Warsaw, Poland  
 phone (+48 22) 673 04 08, 879 70 46  
 fax (+48 22) 610 55 36, 610 81 01  
 e-mail: mpw@mpw.pl, www.mpw.pl

