

Handheld Full Digital Ultrasound SUN-808F



Advantages:

- ◆ Light weight of 0.5 kgs, very convenience for doctors to carry out.
- ◆ U Disk for upgrade.
- ◆ Dismountable battery.
- ◆ Connect with Jet printer, Laser printer to print directly.
- ◆ Other performance is as the same as the laptop computer, such as power save mode, touch mouse and so on.

Features:

- ◆ Battery
- ◆ 192-frame cineloop
- ◆ Two USB ports
- ◆ SD card
- ◆ General software, Obstetrics software and Cardiac software.

Software:

- ◆ General measurement: distance, circumference, volume, angle, heart rate and etc.
- ◆ Obstetrics measurement software: BPD, GS, CRL, AD, AC, FL, HC, FTA, APTD, TTD and calculating fetus' weight, pregnancy week, fetal physiological rating according to the previous measurements.
- ◆ Cardiac measurement software. The measurement result could be shown automatically.

Specifications

Scanning mode	electronic linear array, electronic convex array
Imaging model	B, B/B, B/M, M, 4B
Gray scale	256 levels, four selectable gamma curve

Transducer frequency	2.5-8.5 MHz
Magnification	×0.8, ×0.9, ×1.0,×1.1,×1.2,×1.3, ×1.4,×1.5
Permanent storage	1024
Cine loop	192, manual and automatic
Sound Power	8 grades from 0-7
Dynamic Range	Adjustable from 30-75
USB Ports	2
IP set	8
Body Mark	35 kinds
Pseudo color	5 kinds
Image Processing	Up/Down, Left/Right, Black/White, Frame correlation Edge enhancement, Scroll
Measurement	Circumference, Area, Volume, Heart ratio, Velocity, OB and Cardiac
Focus	Number and location of the focus can be adjusted
Puncture	Puncture guide line
TGC	Adjustable, Near field, Middle field and Far field are adjustable from 39-99
Body Marks	35
IP set	Hospital's name, Date, Time, Formula of Fetus' weight and Pseudo color
Image store format	BMP, DICOM
Formula of Fetus' weight	OSAKA, TOKYO1, TOKYO2, MERZ
Image	Frame correlation, Edge enhancement, Dynamic range, center line, scan angle Puncture
Voltage	AC85V-265V

probes for optional

7.5Mhz linear probe



6.5Mhz transvaginal probe



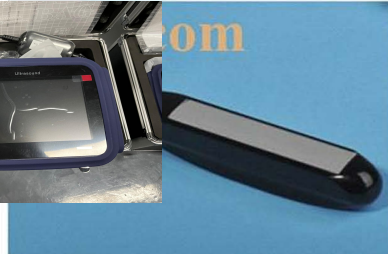
3.5Mhz vet micro-convex probe



5.0Mhz rectal probe



3.5Mhz cardiac probe



5.0Mhz vet rectal probe