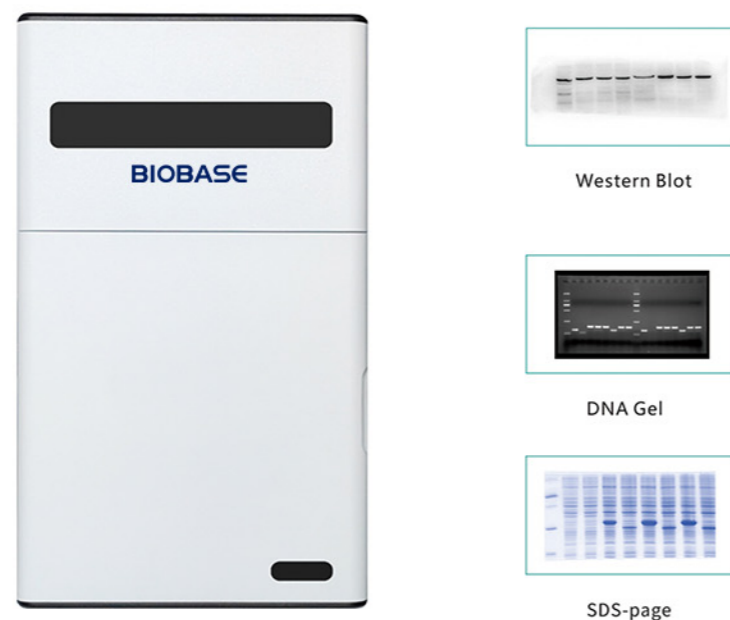


Automatic Chemiluminescence Gel Imaging System



Applications:

Nucleic acid detection: EB, SYBRGold, SYBRGreen, SYBRsafe, GelRed, GelGreen, Fluorescein.

Protein test: Silver dyeing, SDS-page, Visible light imaging.

Luminescence detection: Western Blot, Western Lightning, ECL, ECLplus

Features:

- * Fully automatic control of the lens and light source
- * Precise automatic exposure in calculate, no need to repeat calculation the exposure time
- * One button shooting, marker and chemiluminescence image automatic stacking
- * Cryogenic scientific research ultrasensitive CCD camera, wide aperture Lens

Technical Parameters:

Model	BK-ACG600	BK-ACG900
Camera Resolution	6.0MP	9.1MP
Cooling Temperature	-65°C	
Photosensitive Efficiency	>75%	>79%
Pixel Size	4.54*4.54um	
Exposure Time	1ms-120min	
Pixel Density	16 Bits (0-65535)	
OD	≥4.8OD	
Lens	Standard: F=0.95, 25mm; optional: F=0.8,25mm	
UV Transmission	LED 312nm, optional 470nm transmitted blue light	
White Light Reflection	LED reflection (cold light)	
Filter	Standard 590nm, other optional	
Shooting Area	16×14cm	
Timer Shut Down	1-60min	
Power Supply	Standard: 220V 50Hz, Optional: 110V 60Hz(internal transformer)	
Packing Size	490*515*845mm	
Gross Weight	40kg	

Integrated Automatic Gel Imaging System



Applications:

It can be used for nucleic acid detection of various fluorescent dyes such as EB, SYBRMGold, SYBRM Green, SYBRM Safe, Gel redGel GreenTMTexasRed, Fluorescein labeledDNA/RNA.

Features:

- * High-resolution CCD camera, less noise, high sensitivity, large resolution, with F1.2 high-throughput 6x triple-variable autofocus lens, and special filters for nucleic acid dyes.
- * Ultraviolet sample excitation stage and blue light sample excitation stage can be freely selected according to the needs of different nucleic acid dyes.
- * A special cover-type glue-cutting filter is added, which is easier to operate than the traditional glue-cutting port.
- * Anti-ultraviolet and blue light damage, no dark room required.

Technical Parameters:

Model	BK-ATG100
Camera Resolution	5.0MP
Photosensitive Efficiency	>65%
Exposure Time	1ms-3000ms
Pixel Density	16 Bits (0-65535)
OD	≥4.8OD
Lens	Large aperture autofocus lens F=1:1.2, 8~48mm
UV Transmission	302nm, optional other transmitted blue light
White Light Reflection	LED reflection (cold light)
White Light Transmission	White light conversion sample board
Filter	Standard 590nm, other optional
Shooting Area	21×21cm
Timer Shut Down	1-60min
Touch System	13.3-inch touch system
Power Supply	Standard: 220V 50Hz, Optional: 110V 60Hz(internal transformer)
Packing Size	490*515*885mm
Gross Weight	31kg