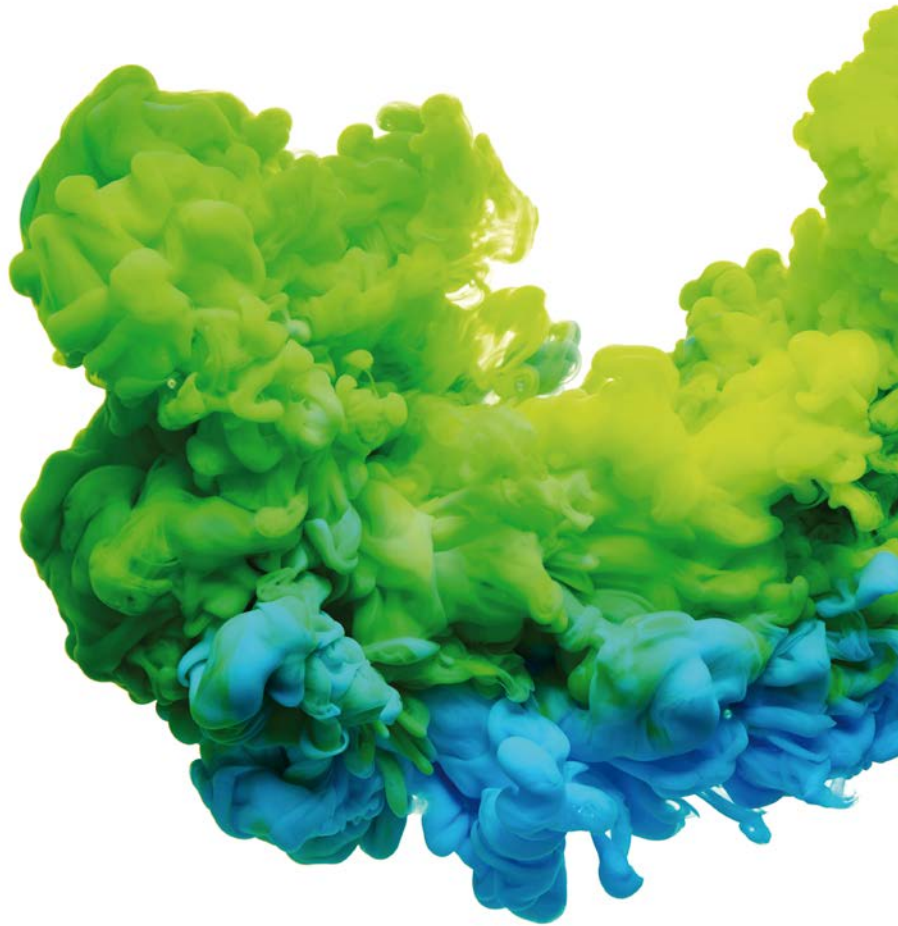




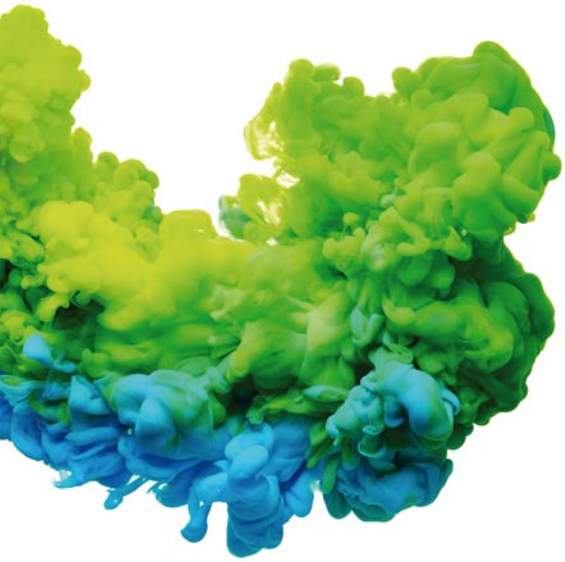
WINNING THE FUTURE THROUGH INNOVATION



Barrier washer extractors



ECOVOLUTION
by DOMUS



Power, control and total disinfection

The strict sanitary rules RABC require powerful machines with specific washing processes for hospitals, care homes, pharmaceutical, nuclear and cosmetic industries, etc.

DOMUS range of barrier washers outstand for its advanced technology, ergonomics and safety features. With capacities from 16 to 100 kg; they are perfect to adapt to the needs of this very specific and demanding market. Installed between two separate areas, avoids any contact between dirty (infectious) linen and clean linen, as well as any type of re-contamination during the process. At the same time, its ergonomic design allows to work in an efficient way, which increases production in a high percentage.

We offer several ranges, all of them with TOUCH II microprocessor: 7" touchscreen with features to ensure EFFICIENCY, TRACEABILITY and MAXIMUM HYGIENE.

ECOVOLUTION by DOMUS

MEDICAL BARRIER WASHERS | DMB 90° New

CONTROL TYPE	HEATING	CAPACITY	
		18 kg	27 kg
TOUCH II Programmable Control	Electric, HW + steam	DMB-18 TOUCH II	DMB-27 TOUCH II

MEDICAL BARRIER WASHERS | ASM 180°

CONTROL TYPE	HEATING	CAPACITY	
		16 kg	22 kg
TOUCH II Programmable Control	Electric, steam, electric + steam	ASM-16 TOUCH II	ASM-22 TOUCH II

BARRIER WASHERS | DHB

CONTROL TYPE	HEATING	CAPACITY			
		27 kg	35 kg	50 kg	70 kg
TOUCH II Programmable Control	Electric, steam, electric + steam	DHB-27 TOUCH II	DHB-35 TOUCH II	DHB-50 TOUCH II	DHB-70 TOUCH II

BARRIER WASHERS | PULLMAN

CONTROL TYPE	HEATING	CAPACITY
		100 kg
TOUCH II Programmable Control	Electric, steam and dual (electric + steam)	ASA-100 TOUCH II PULLMAN

MEDIUM SPIN



HIGH SPIN



HIGH SPIN

DMB New

- ✔ Hygienic barrier washer with 2 separate doors at 90°, to be built with a sanitary frame.
- ✔ Models of 18 and 27kg.
- ✔ Needs to be anchored to the floor (anchoring base to be ordered separately with the machine).
- ✔ G factor 300.
- ✔ TOUCH II 7" touchscreen microprocessor, only on the dirty side.
- ✔ Outer casing in grey skinplate
- ✔ Vat and drum in stainless steel AISI 304
- ✔ 3 water inlets. 8 dosing signals. Option of 6 extra signals.
- ✔ Manual positioning of the drum.



ASM

- ✔ Pass-through barrier washer extractors with 2 opposed doors (180°) with sanitary separating frame.
- ✔ Models of 16 and 22 kg.
- ✔ G Factor 350.
- ✔ TOUCH II Microprocessor with a 7" touch screen.
- ✔ Two water inlets.
- ✔ Outer casing in skinplate, top stainless steel.
- ✔ Central drain.
- ✔ Automatic positioning of drum.
- ✔ Heating: electric, steam.
New model dual heating (electric + steam).



DHB

- ✔ Pass-through barrier washers, with 2 opposed doors (180°), soft mounted.
- ✔ Models of 27, 35, 50 and 70 kg. G Factor 375.
- ✔ TOUCH II Microprocessor with a 7" touch screen.
- ✔ Double display standard.
- ✔ Panels in grey skinplate and top panel in stainless steel.
- ✔ Drum and vat in stainless steel AISI 304.
- ✔ Three water inlets.
- ✔ Central drain.
- ✔ Automatic positioning of drum, with motor brake standard.
- ✔ Heating: electric, steam.
New model dual heating (electric + steam).



PULLMAN

- ✔ Pass-through barrier washer - Pullman partition, soft mounted.
- ✔ 100 kg. model. G Factor 325.
- ✔ TOUCH II Microprocessor with a 7" touch screen.
- ✔ Double display standard.
- ✔ Three water inlets.
- ✔ External panels in skinplate and top in stainless steel.
- ✔ Drum and vat in stainless steel AISI 304.
- ✔ Central drain.
- ✔ Automatic positioning of drum, with motor brake standard.
- ✔ Heating: electric, steam.
Dual heating as option (electric + steam).

ECOENERGY



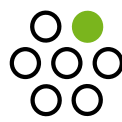
TOUCH II

- ✓ **TOUCH II Microprocessor**, user friendly and totally programmable 7" screen touch
- ✓ **Traceability as standard**
- ✓ **8 dosing signals as standard**
- ✓ **Screen on both sides of the machine**
Touch operated on the dirty side and only displaying on the clean side to show the status of the washing program. Not available in DMB
- ✓ **USB Connection**. PC software free of charge for programming, traceability, data analysis...
- ✓ **Remote communication ready**
- ✓ Customisation of programs according to each need
- ✓ **Wet Cleaning**
- ✓ **OPTIONS**
 - WIFI connection
 - Printer
 - 6 extra dosing signals



ERGONOMICS

- ✓ **Huge doors** opening making loading and unloading operation easier, biggest opening in the market
(Ex: DBW35 : Drum 640 x 515 mm – Vat 700 x 650 mm)
- ✓ **User-friendly drum opening by push button**
- ✓ Standard height of loading (door base at 800 mm)
- ✓ **OPTIONS**
Plinth to align loading height (door base at 850 mm)



OUTSTANDING FEATURES

- ✓ **Double display** (as option in ASM models)
- ✓ **Automatic positioning of drum** with motor brake to make loading and unloading operations easier (as option in ASM models). Not available in DMB
- ✓ **3 water inlets as standard** (2 water inlets in ASM range)
- ✓ **Wet cleaning**: equipped with all features to use Wet cleaning programs (useful in nursing homes)
- ✓ Side panels in skinplate and top panel in stainless steel, **easy to clean**
- ✓ **New dual heating electric-steam model - energy savings**
- ✓ **OPTIONS**
 - Detergent box kit (instead of pumps)
 - 2nd drain valve for water recovery
 - Titration valve
 - UPS kit to release drum brake in case of power failure
 - AISI 304 stainless steel outer casing



CONNECTIVITY

- ✓ **Remote technical service**: machine monitoring, error warning, remote desk and data recovery for technicians and maintenance, software updates.
- ✓ **Management of laundries**
- ✓ **OPTIONS**
Domus Connect: communication module.



EFFICIENCY

- ✓ **Water savings**
Possibility of configuring three levels of savings
- ✓ **Intelligent Consumption**: automatic adjustment of water and soap consumptions (standard)
- ✓ **Optimal loading**
- ✓ **Prepared to be connected to water recovery tanks ECOTANK**
- ✓ **Low water consumption**
Less than 10 liters of water per kg and cycle (standard washing cycle 60°C)
- ✓ **High G FACTOR**
Reduced residual moisture.
Reduced drying time.
- ✓ **OPTIONS**
Automatic weighing system on feet



MAINTENANCE

- ✓ **Electric components on the left side, mechanic components on the right side, connections on the top**
Easy access to all the components.
Easier to connect, all connections protected from water and detergents.
- ✓ **Central drain** easy installation
- ✓ **Technical menu**
Statistics, alarms, autotest, data recovery for technicians and maintenance
- ✓ **OPTIONS**
 - Side drain
 - Low steam pressure: to enable installation of steam heated washer with very low pressure of steam on site



Programmable microprocessor TOUCH II

Connectivity, traceability and efficiency are the most outstanding features on TOUCH II.



OUTSTANDING FEATURES

Microprocessor TOUCH II

User friendly, totally programmable 7" touchscreen

Configuration of washing and spinning speed.
Complete regulation of water levels
Regulable washing temperature from 20°C to 90°C.
Standard WET CLEANING system.

37 languages

Available and easy to configure, thanks to DOMUS aim to be accessible to everyone.



Wet Cleaning, traceability as standard

Equipped with all features to use wet cleaning programs (useful in nursing homes)
Adjustable washing speeds and temperatures
Fully regulation of water levels
8 dosing signals as standard + 6 extra as option

Screen on both sides of the machine

Standard on DHB and Pullman.
Touch operated on the dirty side and only displaying status of program on the clean side (option in ASM models).

USB Connection

PC software (Wash Control) free of charge for programming, traceability, data analysis...



Outer casing in skinplate

and top panel in stainless steel, easy to clean. As option, AISI 304 stainless steel outer casing

3 water inlets

standard in new DMB, DHB and Pullman (third inlet as option in ASM models)

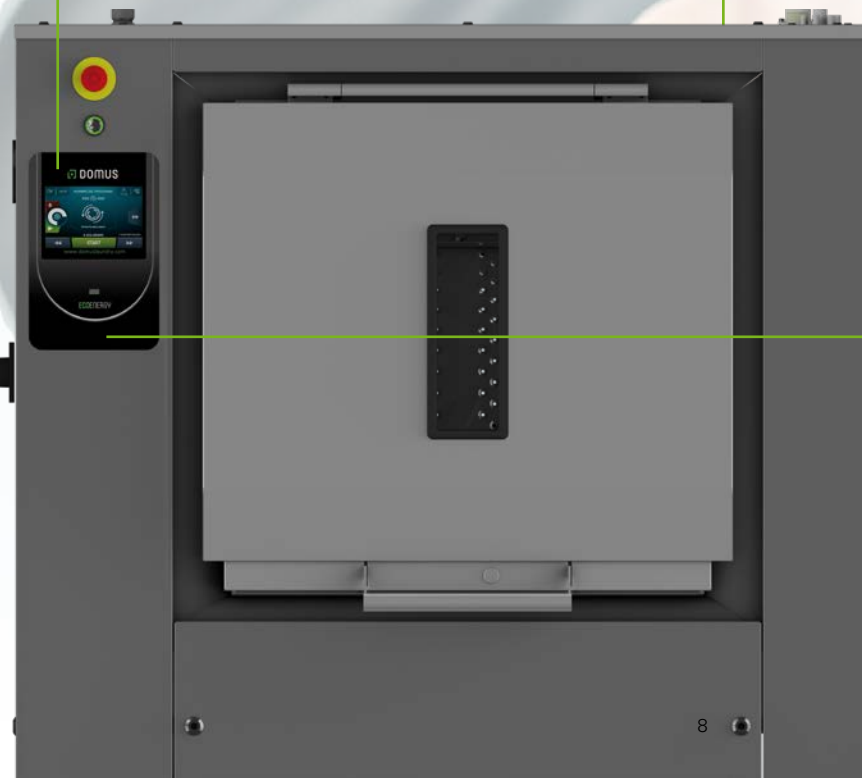
Automatic positioning of drum

Standard, with motor brake to make loading and unloading operations (as option in ASM models and not available in DMB)



Other options

Detergent box kit (instead of pumps)
Dual heating electric - steam: energy savings
2nd drain valve for water recovery
Titration valve



EFFICIENCY

DOMUS new ranges of barrier washers have focused on water, energy and chemical savings, as well as top performance as main priority

High G-Factor reduces residual moisture and drying time



Water savings

Possibility to choose from three levels of savings (standard)



Optimal loading

Manual indication of the loading weight (standard feature)

Automatic weighing system on feet

as option (not available on DMB or ASA-100)

Energy
Energy optimisation is fundamental in a laundry.
Our machines have been designed for greater energy savings with this in mind.

Water
Saving water and using it properly are our goals, we do not want to waste it.
We offer washing machines with optimised design and programming as well as a unique accessory, the ECOTANK: water recovery tanks.

Chemicals
We design our washing machines with features to ensure the most accurate use of chemicals.

Technology
We apply the latest technology to offer very efficient laundry machinery.

ECOTANK

Prepared to be connected to water recovery tanks

Domus barrier washer extractors, with Touch II and the double drain, can be connected to the new ECOTANK, which allows the water recovery, achieving important water and energy savings

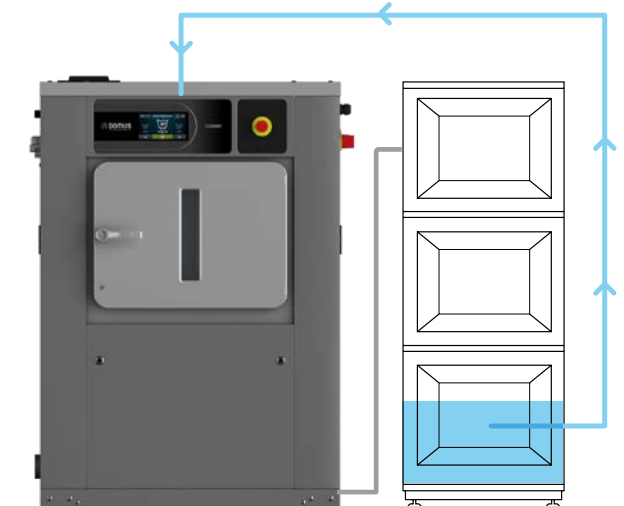


WIDE RANGE

Models of 1, 2 or 3 tanks

Different volumes of 80 or 150 L

WATER SAVING





ERGONOMICS

As health and safety at work had become an important issue, our equipment is designed to be the most comfortable for the user.

Huge door opening

making the loading and unloading operations easier, biggest opening in the market.

Huge doors
DHB 27 542 x 650 mm
DHB 35/50 700 x 650 mm
DHB 70 1402 x 650 mm
ASA-100 960x700 mm

850 mm



Ergonomic height of loading

Plinths to align loading height

(door base at 850 mm except DMB or ASA-100)

User friendly drum opening by push button

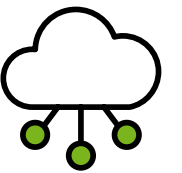


CONNECTIVITY

One thing that is a must nowadays is to stay **CONNECTED**. DomusConnect is the new IoT solution: a cloud based platform which allows many possibilities.

THE INTERNET OF THINGS

DOMUSCONNECT



Remote technical service

Machine monitoring, machine error warning, management for traceability and statistics. Remote desk and data recovery for technicians and maintenance, software update, etc.

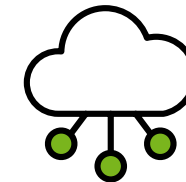
Bidirectional communication with the machine to offer a quicker and closer service, to update software or to solve technical issues.

Management of laundries

Our DOMUS IoT solution allows you to monitor and manage your laundry business.

Process control

Control of the programmes run or currently running, comparisons and historical and current information will help you to guarantee the quality and hygiene of the process.



IoT

Domus Connect

Offers feedback from the machines to the device through the cloud, about traceability and statistics to be analyzed and to ensure **MAXIMUM HYGIENE**.



MAINTENANCE

One of DOMUS concerns is to make life easier for our clients. That includes offering quality equipment and parts of reputed brands, which demand little maintenance.

Easy access to components

Electric components on the left side, mechanic components on the right side, connections on the top. Easy access to all the components. Easier to connect, all connections protected from water and detergents.

Technical menu

Statistics, alarms, autotest, data recovery for technicians and maintenance.

Central drain

Easy installation.

Other options

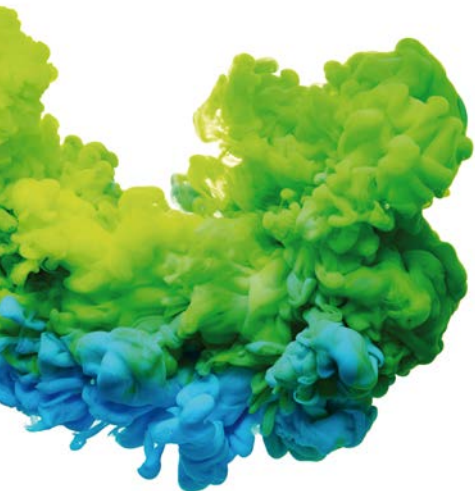
Side drain.
Low steam pressure: to enable installation of steam heated washer with very low pressure of steam on site.



Technical data

MEDICAL RANGE		UNIT.	DMB-18	DMB-27	ASM-16	ASM-22	DHB-27	DHB-35	DHB-50	DHB-70	ASA-100
DRUM											
Load capacity 1:9	Kg		20	28	18	25	30	39	54	78	100
Load capacity 1:10	Kg		18	25	16	22	27	35	49	70	90
Volume	l		180	250	158	220	266	347	489	694	900
Diameter	mm		700	770	633	633	800	800	800	800	1050
Depth	mm		470	530	500	700	530	690	974	1380	1032
Drum compartments			1	1	1	1	1	1	1	2	2
GENERAL DETAILS											
Washing speed	r.p.m.		47	40	45	45	45	45	45	45	45
Spining speed	r.p.m.		874	836	1000	1000	920	920	920	920	750
G Factor			300	300	350	350	375	375	375	375	325
Double drain			OPC	OPC	OPC	OPC	OPC	OPC	OPC	OPC	STD
TOUCH II Screen			7"	7"	7"	7"	7"	7"	7"	7"	7"
Double display			NO	NO	OPC	OPC	STD	STD	STD	STD	STD
Electric brake			NO	NO	OPC	OPC	STD	STD	STD	STD	STD
Plinth of height			NO	NO	OPC	OPC	OPC	OPC	OPC	OPC	N/A
3 water inlets			STD	STD	OPC	OPC	STD	STD	STD	STD	STD
DOOR											
Drum opening dimensions	mm		350x350	350x350	400x315	400x315	480x515	640x515	640x515	2x(640x515)	900x500
Vat opening dimensions	mm		400x400	400x400	455x415	455x415	542x650	700x650	700x650	1402x650	960x700
Height base door	mm		348	400	670	670	800	800	800	800	960
POWER											
Motor (kW)	kW		2,2	3	2,2	2,2	4	4	5,5	7,5	15
Heating (kW) (Electric / dual model)	kW		12	18	12	18	18	27	36	45	60
Max. power (kW) (Electric model)	kW		12,75	19	14,2	20,2	22	31	41,5	52,5	75
Max. power (kW) (Steam model)	kW		2,2	3	2,2	2,2	4	4	5,5	7,5	15
CONNECTIONS											
Water inlet	inch		3/4"	3/4"	3/4"	3/4"	3/4"	3/4"	1"	1"	1"
Steam inlet	inch		1/2"	3/4"	3/4"	3/4"	3/4"	3/4"	3/4"	3/4"	3/4"
Drain (mm)	inch		3"	3"	3"	3"	3"	3"	3"	3"	3"
Compressed air inlet	mm		N/D	N/D	N/D	N/D	N/D	N/D	N/D	N/D	8
DIMENSIONS											
Width (mm)	mm		908	1004	984	1.184	1.201	1.359	1.654	2.061	1.677
Depth (mm)	mm		840	1.011	914	914	1.098	1.098	1.098	1.098	1.346
Height (mm)	mm		1.307	1.340	1.398	1.398	1.581	1.581	1.581	1.581	1.964
Net weight (Kg)	Kg		331	390	438	471	886	926	1.063	1.190	1.900
PACKING DIMENSIONS											
Width (mm)	mm		950	1050	1.072	1.262	1.464	1.608	1.903	2.310	1.890
Depth (mm)	mm		1.010	1.150	1.102	1.102	1.300	1.300	1.300	1.300	1.540
Height (mm)	mm		1.500	1.523	1.530	1.530	1.742	1.742	1.742	1.742	2.150
Gross weight (Kg)	Kg		381	440	459	494	906	946	1.085	1.220	1.958
Volume (m³)	m³		1,43	1,84	1,81	2,13	3,32	3,64	4,31	5,23	6,26

*DOMUS reserves the right to modify the technical data without notice.



WINNING THE FUTURE THROUGH INNOVATION

C. Energia, 12 - Pol. Ind. La Quintana
08504 Sant Julià de Vilatorrada
BARCELONA (SPAIN)

SALES DEPARTMENT

T. +34 93 812 27 96
M. +34 649 482 730
domus@domuslaundry.com
export@domuslaundry.com

AFTER SALES DEPARTMENT

T. +34 93 888 76 73
sat@domuslaundry.com

PARTS DEPARTMENT

T. +34 93 888 76 83
parts@domuslaundry.com

ONNERA GROUP



WWW.DOMUSLAUNDRY.COM

