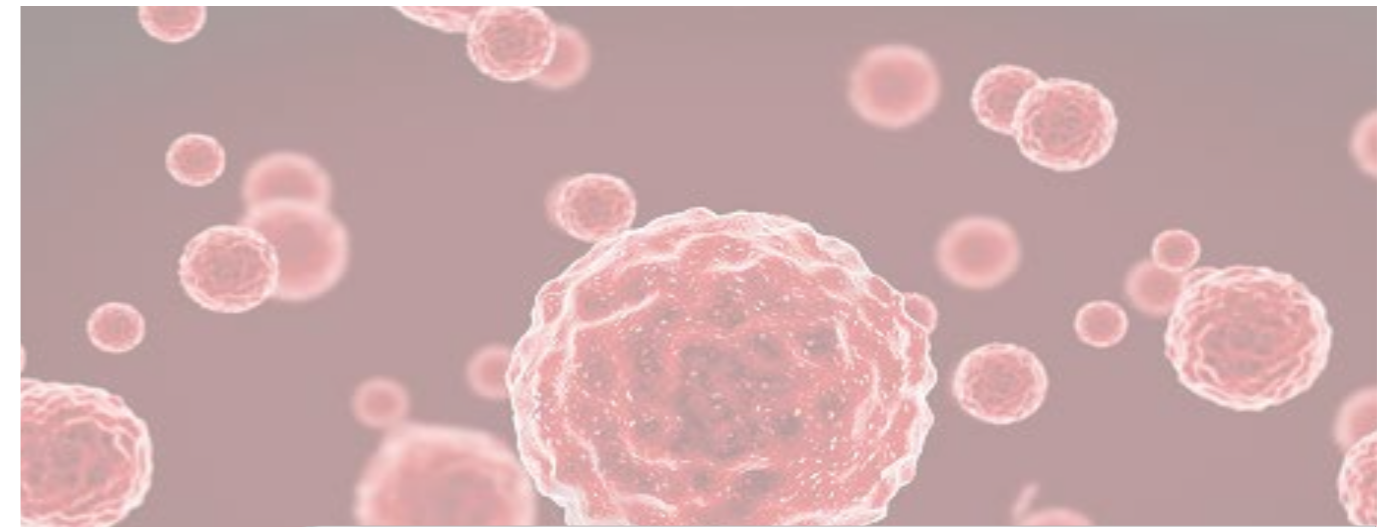
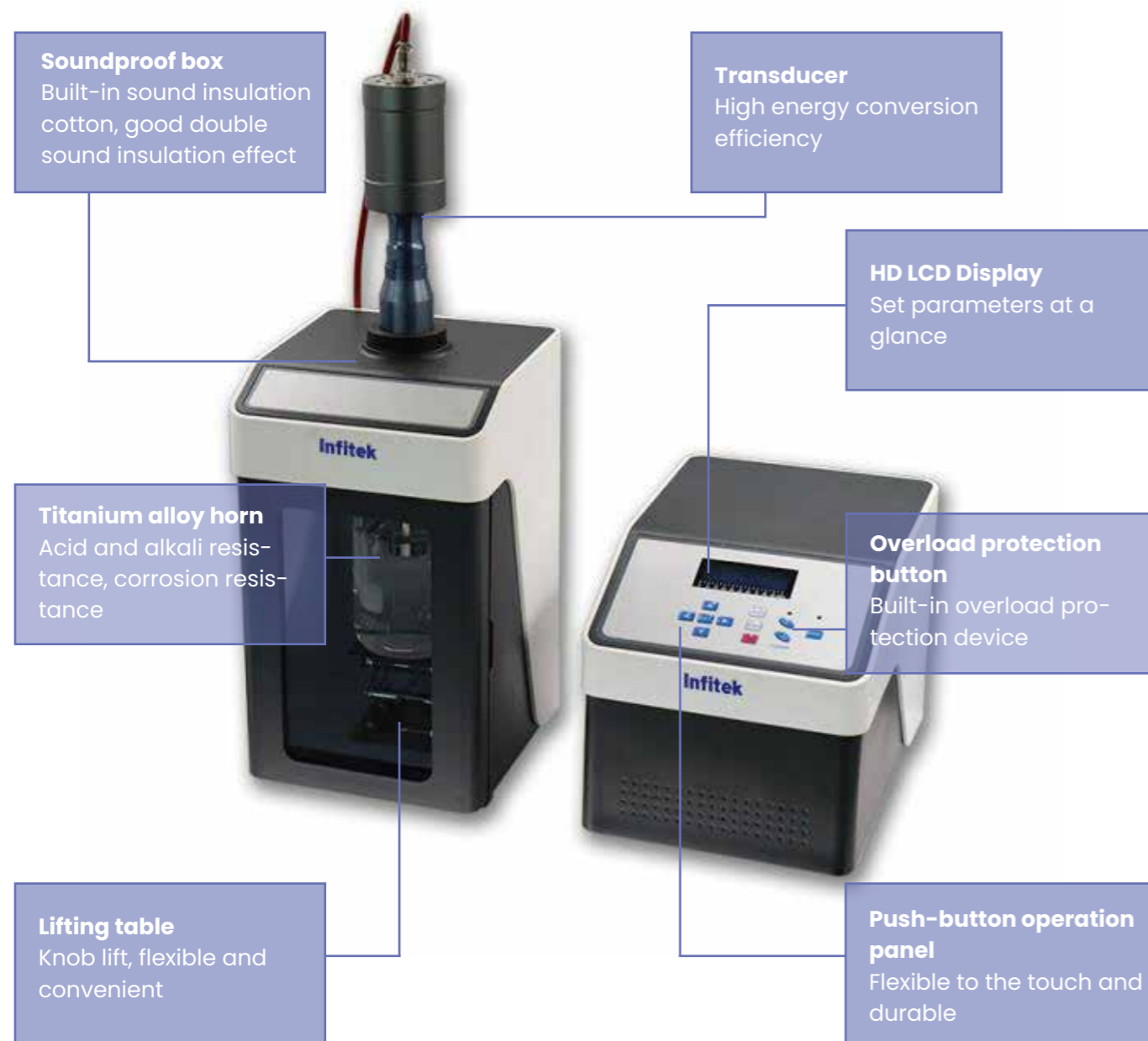


Ultrasonic Cell Disruptor, USCG-N Series

USCG-150N USCG-250N USCG-300N USCG-450N
 USCG-600N USCG-900N USCG-1200N USCG-1800N











Description

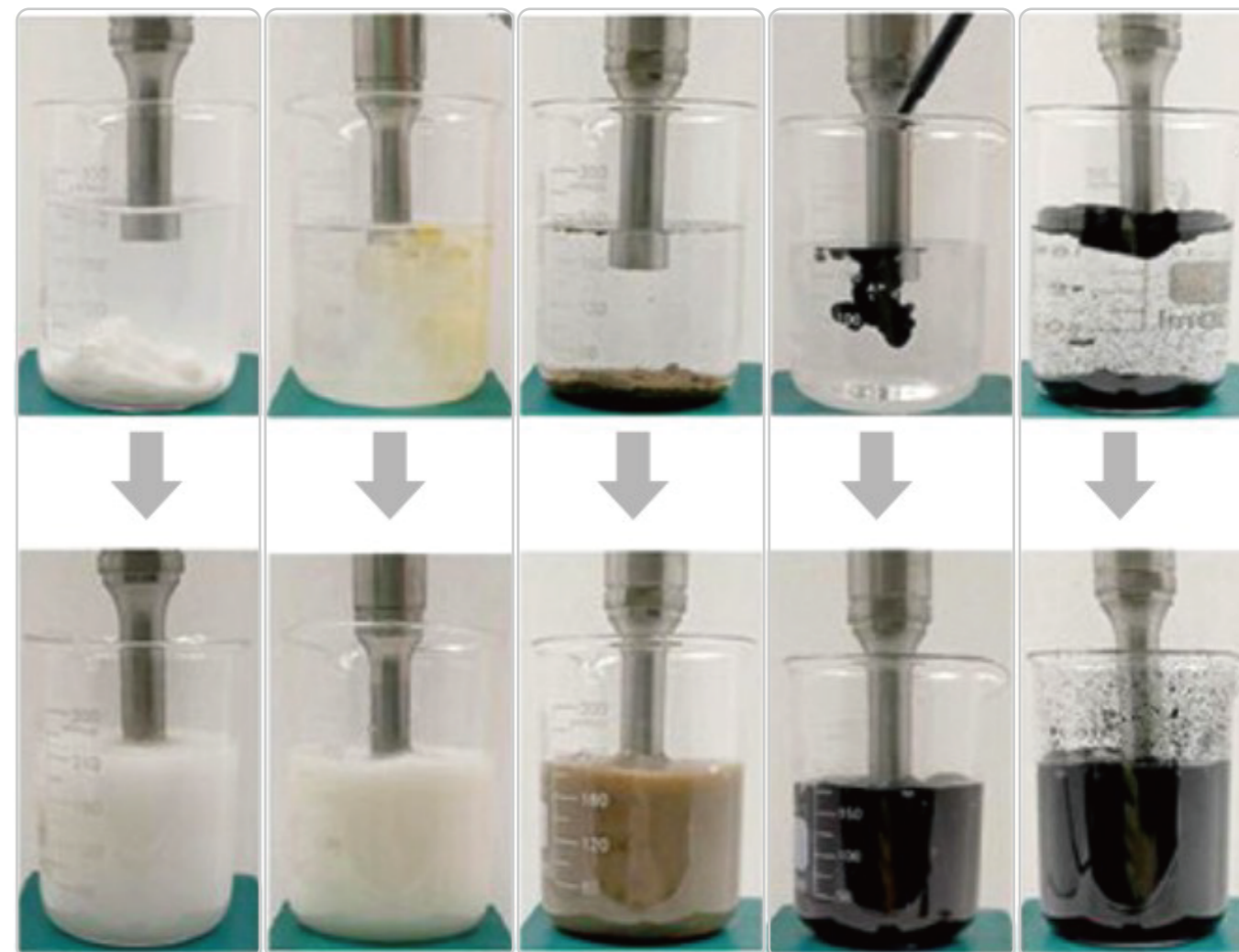
- It is mainly applied in three aspects. First, traditional Chinese medicine extraction, cell, bacterial and viral tissue fragmentation. For example, the extraction of cell contents. Second, dispersion and homogeneity of material particles and emulsification of products. For example, the dispersion of nano materials (silicon dioxide, carbon dioxide, carbon nanotubes, graphene, etc.). Third, accelerate dissolution and chemical reaction. For example, it is used in chemical synthesis.



Features

-  Automatic resonance point and power control, without frequent manual energy adjustment.
-  The 99 hour process control timer controls the total working time: from 1 second to 99 hours, and pauses the current running task in real time.
-  The working time is displayed in cumulative status.
-  On / off pulse timer: ensure high-intensity processing of temperature sensitive samples, and the on and off cycles can be set from 1 second to 99 minutes.
-  Automatic amplitude compensation ensures that the probe amplitude does not change due to load changes during the ultrasonic process.
-  Sample overload and over temperature protection device.
-  Automatic frequency tracking and fault alarm.
-  Easy to operate, direct typing.

Ultrasonic Contrast



Composite material dispersion

Oil water emulsification

Soil extraction

Graphene dispersion

Carbon nanotube dispersion

Specifications



Model	USCG-150N	USCG-250N	USCG-300N	USCG-450N	USCG-600N	USCG-900N	USCG-1200N	USCG-1800N
Electricity	220V/50Hz 80W	220V/50Hz 150W	220V/50Hz 300W	220V/50Hz 450W	220V/50Hz 600W	220V/50Hz 900W	220V/50Hz 1200W	220V/50Hz 1800W
Frequency	20KHz							
Power regulation	0%--100%, 5% increment							
Ultrasonic mode	Pulse mode / continuous mode							
Timing function	LCD, 1s~99h adjustable							
Piezoelectric frequency conversion energy converter	CV33, PZT lead zirconate titanate piezoelectric ceramics							
Diameter	44mm			63mm		73mm		
Length	152mm			154mm		160mm		
Luffing lever material	Titanium alloy material, TI-6AL-4V							
Luffing lever length	128mm	125mm	128mm	134mm		135mm	130mm	
Processing capacity	0.5-50ml	2-100ml	5-200ml	10-300ml	20-500ml	20-1000ml	50-2000ml	100-3000ml
Standard probe	Φ3mm	Φ6mm	Φ8mm	Φ13mm	Φ16mm	Φ13mm	Φ20mm	Φ25mm
Host size	245*365*245mm							
Soundproof box size	240*250*390mm							
Host weight	8.5Kg			10.5Kg		13.5Kg		
Soundproof box weight	4.5Kg							
Lifting table	Stainless steel 100*100mm							

Horn selection table

Model	Nominal frequency	Diameter	Capacity	Optional horn size
USCG-150N	20KHz	Φ3mm	200uL~50mL	Φ2(0.2-10ml) Φ6(5-150ml)
USCG-250N	20KHz	Φ6mm	500uL-100mL	Φ2(0.2-10ml) Φ3(0.5-80ml) Φ8(5-200ml)
USCG-300N	20KHz	Φ8mm	5mL-200mL	Φ2(0.2-10ml) Φ3(0.5-80ml) Φ6(5-150ml) Φ10(10-400ml)
USCG-450N	20KHz	Φ13mm	10mL~300mL	Φ3(0.5-80ml) Φ6(5-150ml) Φ8(5-200ml) Φ10(10-400ml) Φ16(20-1500ml)
USCG-600N	20KHz	Φ16mm	20mL~500mL	Φ3(0.5-80ml) Φ6(5-150ml) Φ8(5-200ml) Φ10(10-400ml) Φ13(10-1200ml) Φ18(20-1800ml)
USCG-900N	20KHz	Φ13mm	20mL~1000mL	Φ3(0.5-80ml) Φ6(5-150ml) Φ8(5-200ml) Φ10(10-400ml) Φ16(20-1500ml) Φ18(20-1800ml)
USCG-1200N	20KHz	Φ20mm	50mL~2000mL	Φ3(0.5-80ml) Φ6(5-150ml) Φ8(5-200ml) Φ10(10-400ml) Φ13(10-1200ml) Φ16(20-1500ml) Φ18(20-1800ml) Φ25(50-3000ml)
USCG-1800N	20KHz	Φ25mm	100mL-3000mL	Φ3(0.5-80ml) Φ6(5-150ml) Φ8(5-200ml) Φ10(10-400ml) Φ13(10-1200ml) Φ16(20-1500ml) Φ18(20-1800ml) Φ20(50-2000ml) Φ30(50-3500ml)